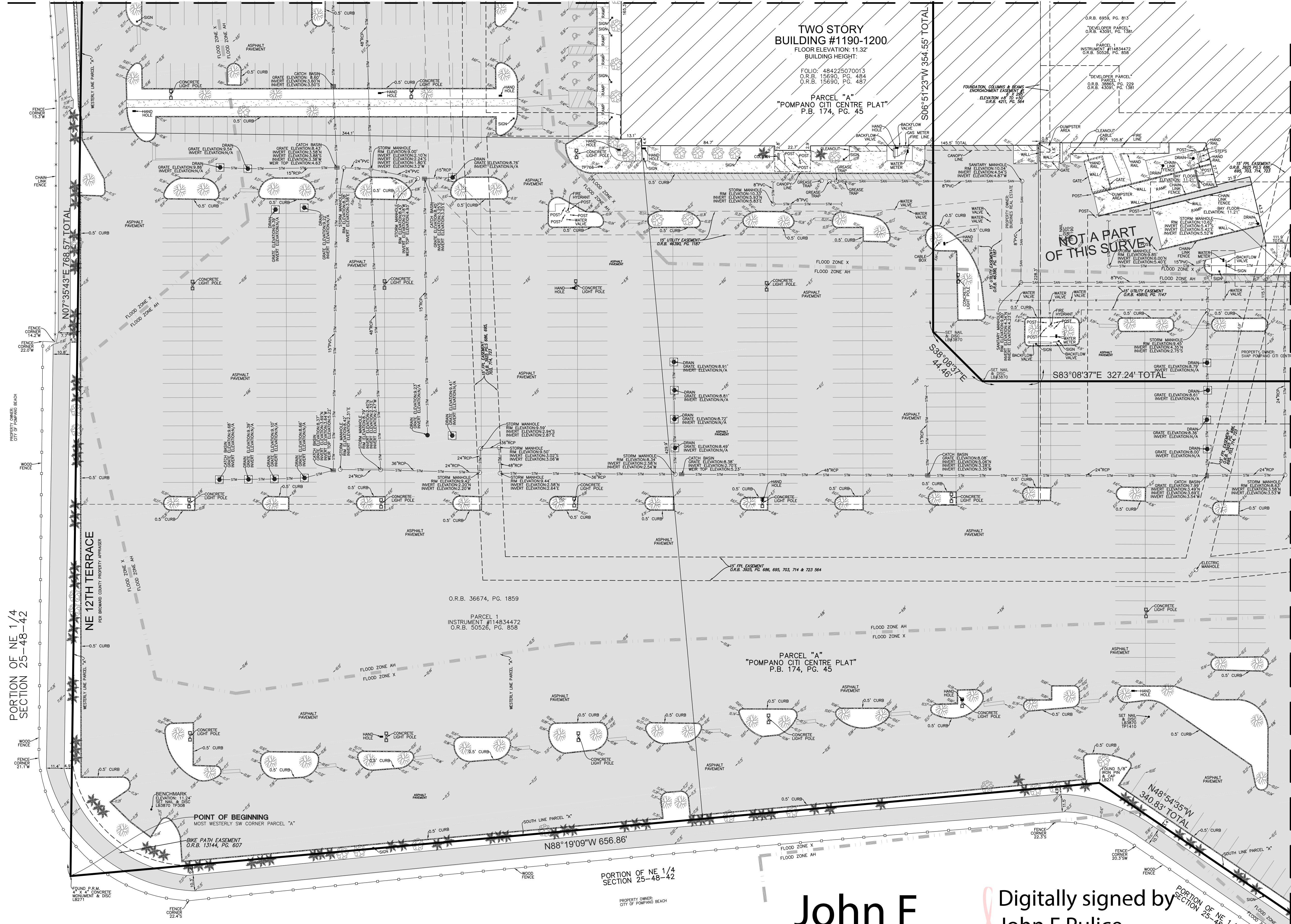


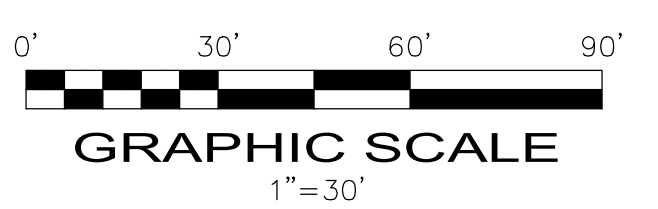
MATCH LINE SHEET 3



PORTION OF NE 1/4 SECTION 25-48-42

MATCH LINE SHEET 4

- LEGEND**
- CONCRETE
 - ASPHALT PAVEMENT
 - PAVERS
 - ELEVATION
 - OHW
 - STM
 - SAN
 - W
 - E
 - G
 - T
 - RCP
 - CMP
 - PVC
 - CL
 - O.R.B.
 - P.B.
 - PG.
 - TP
 - R
 - CA
 - A
 - FPL
 - LB
 - ★
 - ✱
 - ✱
- OVERHEAD WIRES
 - UNDERGROUND STORM SEWER LINE
 - UNDERGROUND SANITARY SEWER LINE
 - UNDERGROUND WATER LINE
 - UNDERGROUND ELECTRIC LINE
 - UNDERGROUND GAS LINE
 - UNDERGROUND TELEPHONE LINE
 - NON-VEHICULAR ACCESS LINE
 - REINFORCED CONCRETE PIPE
 - CORRUGATED METAL PIPE
 - POLYVINYLCHLORIDE PIPE
 - CENTERLINE
 - OFFICIAL RECORDS BOOK
 - PLAT BOOK
 - PAGE
 - TRAVERSE POINT (FOR FIELD INFORMATION ONLY)
 - RADIUS
 - CENTRAL ANGLE
 - ARC LENGTH
 - FLORIDA POWER & LIGHT COMPANY
 - LICENSED BUSINESS
 - PALM TREE
 - OAK TREE
 - CYPRESS TREE
 - UNIDENTIFIED TREE



DEVELOPMENT PARCEL
POMPAÑO CITI CENTER
1190-1200 NE 23RD STREET
POMPAÑO BEACH, BROWARD COUNTY
FLORIDA 33062

**BOUNDARY AND TOPOGRAPHIC SURVEY
ALTAINSPS LAND TITLE SURVEY**

PULICE LAND SURVEYORS, INC.
5381 NOB HILL ROAD
SUNRISE, FLORIDA 33351
TELEPHONE: (954) 572-1777
FAX: (954) 572-1778
E-MAIL: survey@puliceandsurveyors.com
WEBSITE: www.puliceandsurveyors.com
CERTIFICATE OF AUTHORIZATION LB#2570

SCALE: 1" = 30'
DRAWN BY: B.E.
CHECKED BY: J.F.P.
FILE: MORGAN GROUP DEVELOPMENT, LLC
ORDER NO.: 67754
SURVEY DATE: 10/02/20

COPYRIGHT 2020 BY PULICE LAND SURVEYORS, INC. ALL RIGHTS RESERVED. NO PART OF THIS SURVEY MAY BE REPRODUCED, IN ANY FORM OR BY ANY MEANS, WITHOUT PERMISSION IN WRITING FROM AN OFFICER OF PULICE LAND SURVEYORS, INC.

SHEET 2 OF 4
THIS DOCUMENT IS NEITHER FULL NOR COMPLETE WITHOUT SHEETS 1 THROUGH 4 INCLUSIVE.

AAC Pulce
PZ21-12000042
05/02/2023

Digitally signed by
John F Pulice
Date: 2021.12.16
12:31:22 -05'00'